

**9,1** Kg

Weight

± 5%

**120** L

Capacity

**48** Kg

Nominal load

**200** mm

Wheels diameter



### FEATURES

The body and lid are injection moulded in solid coloured high-density polyethylene.

Manufactured using environmentally-friendly recyclable materials.

No heavy metals in the pigments.

Ideal for different types of waste collection: paper and cardboard, glass, packaging, organic matter, etc. ...

Available in a wide range of colours..

DIN or AFNOR standard lifting systems.

Customisation of lid with thermal transfer graphic, area: 230 x 45 mm.

Customisation of lid with an embossed logo, area: 340 x 220 mm.

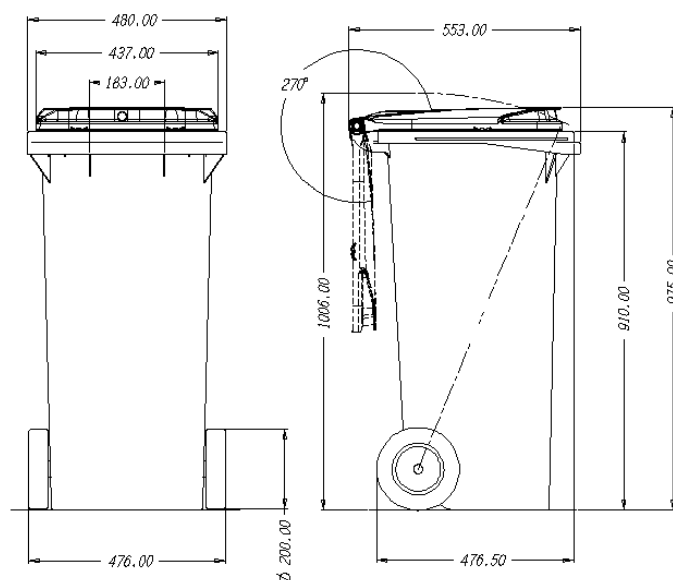
Customisation of body with silk screen or thermal transfer graphic, area: 280 x 290 mm.

CE Marking with sound power level indicated in accordance with European Directive 2000/14/EC. 80,4 db.

UN certificate for the transportation of hazardous goods.

Product Approval Certificate awarded by TÜV Product Service GmbH in accordance with European Standard EN 840.

### STANDARDS



These dimensions are subject to the tolerances given in EN 840-1:2012.

### ATTRIBUTES



QUALITY



ERGONOMICS



FUNCTIONALITY

### ACCESSORIES



GLASS APERTURE



PLASTIC APERTURE



PAPER APERTURE



SIDE HANDLE



CUSTOMISATION



CUSTOMISATION



PEDAL



AVAILABLE IN A WIDE RANGE OF COLOURS

### EQUIPMENT

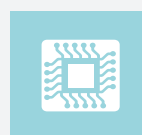
200 mm diameter wheels.

Openings with sizes and features specially designed to accommodate each type of waste, making them easy to use.

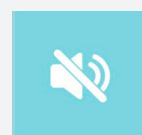
Integrated sound-proofing system in the lid.

Recess for electronic chips.

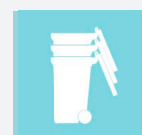
Can be equipped with a range of accessories providing real solutions to every requirement: pedal-operated lid opening, reflective strips, lock, side handle.



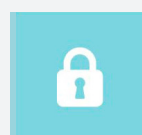
Electronic Chip



Sound-proofing



Easy to stack



Lock



Customisation



Reflective strips

**12,9<sub>Kg</sub>**

Weight

± 5%

**240<sub>L</sub>**

Capacity

**96<sub>Kg</sub>**

Nominal load

**200 / 250<sub>mm</sub>**

Wheels diameter



### FEATURES

The body and lid are injection moulded in solid coloured high-density polyethylene.

Manufactured using environmentally-friendly recyclable materials.

No heavy metals in the pigments.

Ideal for different types of waste collection: paper and cardboard, glass, packaging, organic matter, etc. ...

Available in a wide range of colours..

DIN or AFNOR standard lifting systems.

Customisation of lid with thermal transfer graphic, area: 230 x 45 mm.

Customisation of lid with an embossed logo, area: 340 x 220 mm.

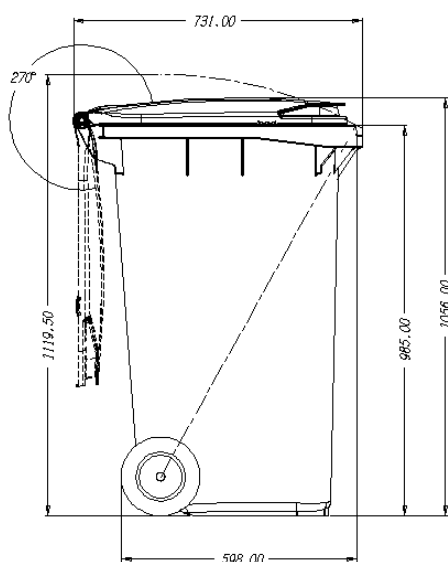
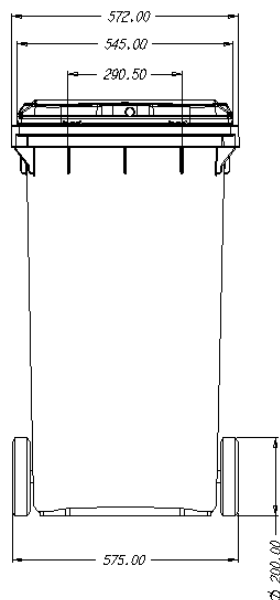
Customisation of body with silk screen or thermal transfer graphic, area: 280 x 290 mm.

CE Marking with sound power level indicated in accordance with European Directive 2000/14/EC. 72,4 db.

UN certificate for the transportation of hazardous goods.

Product Approval Certificate awarded by TÜV Product Service GmbH in accordance with European Standard EN 840.

### STANDARDS



These dimensions are subject to the tolerances given in EN 840-1:2012.

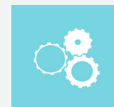
### ATTRIBUTES



QUALITY



ERGONOMICS



FUNCTIONALITY

### ACCESSORIES



GLASS APERTURE



PLASTIC APERTURE



PAPER APERTURE



SIDE HANDLE



CUSTOMISATION



CUSTOMISATION



PEDAL



AVAILABLE IN A WIDE RANGE OF COLOURS

### EQUIPMENT

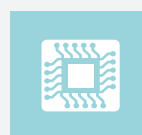
200 mm diameter wheels.

Openings with sizes and features specially designed to accommodate each type of waste, making them easy to use.

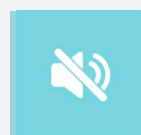
Integrated sound-proofing system in the lid.

Recess for electronic chips.

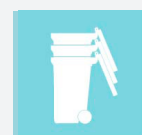
Can be equipped with a range of accessories providing real solutions to every requirement: pedal-operated lid opening, reflective strips, lock, side handle.



Electronic Chip



Sound-proofing



Easy to stack



Lock



Customisation



Reflective strips

**340<sub>L</sub>**  
Capacity

**136<sub>Kg</sub>**  
Nominal load

**200 / 300<sub>mm</sub>**  
Wheels diameter



### FEATURES

The body and lid are injection moulded in solid coloured high-density polyethylene.

Manufactured using environmentally-friendly recyclable materials.

No heavy metals in the pigments.

Ideal for different types of waste collection: paper and cardboard, glass, packaging, organic matter, etc. ...

Available in a wide range of colours..

DIN or AFNOR standard lifting systems.

Customisation of lid with thermal transfer graphic, area: 230 x 45 mm.

Customisation of lid with an embossed logo, area: 340 x 220 mm.

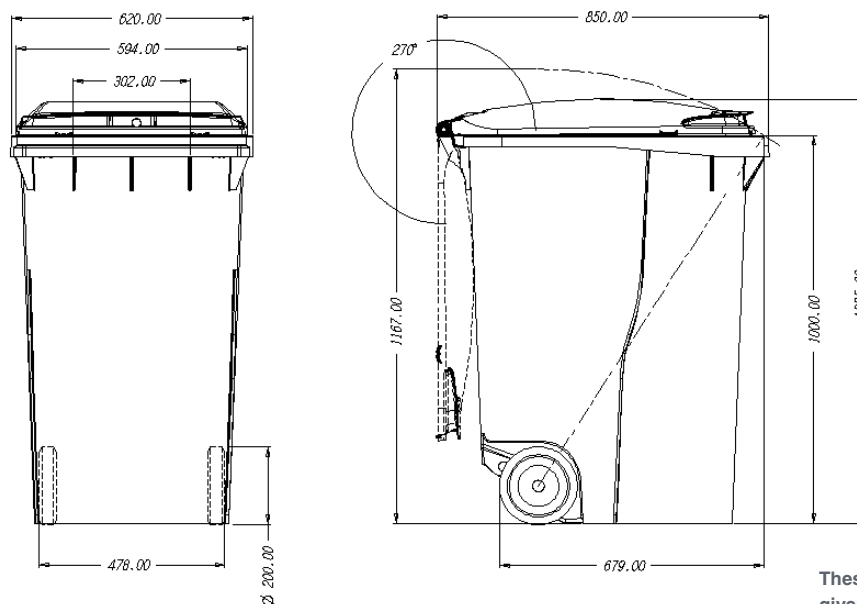
Customisation of body with silk screen or thermal transfer graphic, area: 280 x 290 mm.

CE Marking with sound power level indicated in accordance with European Directive 2000/14/EC. 78,7 db.

UN certificate for the transportation of hazardous goods.

Product Approval Certificate awarded by TÜV Product Service GmbH in accordance with European Standard EN 840.:2012

### STANDARDS



These dimensions are subject to the tolerances given in EN 840-1:2012.

### ATTRIBUTES



QUALITY



ERGONOMICS



FUNCTIONALITY

### ACCESSORIES



GLASS APERTURE



PLASTIC APERTURE



PAPER APERTURE



HANDLE



CUSTOMISATION



CUSTOMISATION



PEDAL OPERATED LID  
OPENING



AVAILABLE IN A WIDE  
RANGE OF  
COLOURS

### EQUIPMENT

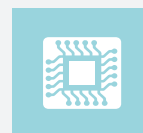
200 / 300 mm diameter wheels.

Openings with sizes and features specially designed to accommodate each type of waste, making them easy to use.

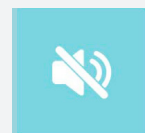
Integrated sound-proofing system in the lid.

Recess for electronic chips.

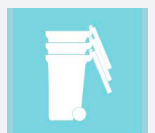
Can be equipped with a range of accessories providing real solutions to every requirement: pedal-operated lid opening, reflective strips, lock, side handle.



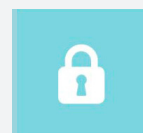
Electronic Chip



Sound-proofing



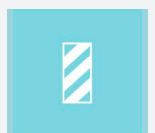
Easy to stack



Lock



Customisation



Reflective strips



**38<sub>Kg</sub>**

Weight

± 5%

**660<sub>L</sub>**

Capacity

**264<sub>Kg</sub>**

Nominal load

**160 / 200 mm**

Wheels diameter



### FEATURES

The body and lid are injection moulded in solid coloured high-density polyethylene.

Manufactured using environmentally-friendly recyclable materials.

No heavy metals in the pigments.

Ideal for different types of waste collection: paper and cardboard, glass, packaging, organic matter, etc. ...

Available in a wide range of colours..

DIN, AFNOR, OSCHNER or VENTRAL lifting systems.

Customisation of lid with thermal transfer graphic, area: 230 x 45 mm.

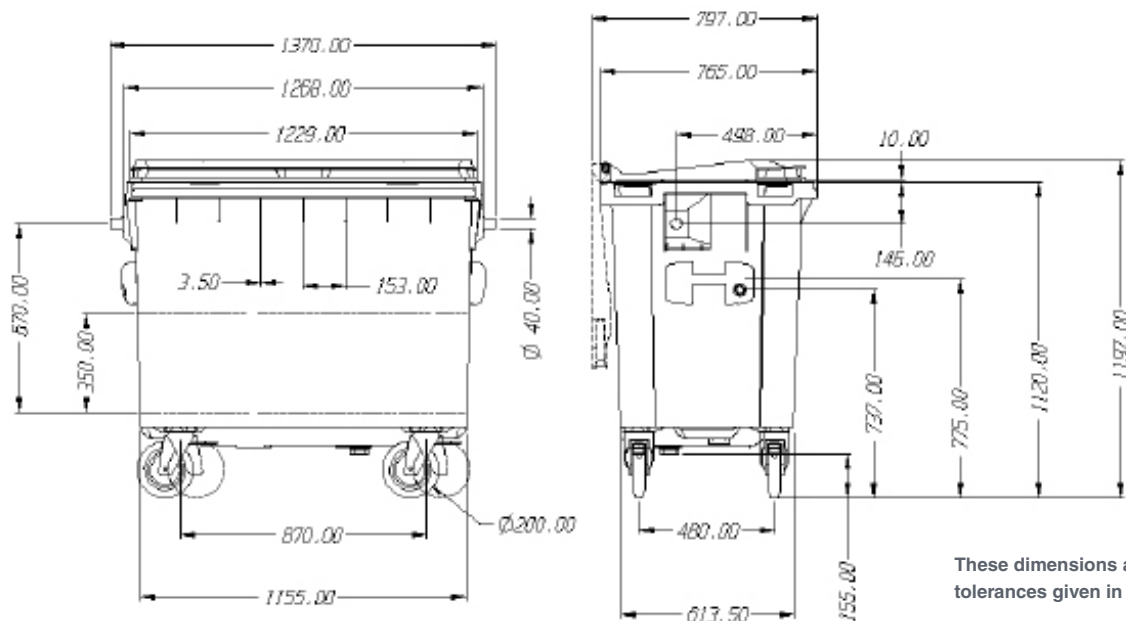
Customisation of body with silk screen or thermal transfer graphic, area: 300 x 400 mm.

CE Marking with sound power level indicated in accordance with European Directive 2000/14/EC. 82,1 db.

Product Approval Certificate awarded by TÜV Product Service GmbH in accordance with European Standard EN 840:2012

UN certificate for the transportation of hazardous goods.

### STANDARDS



These dimensions are subject to the tolerances given in EN 840-1:2012.

F100782Z / 28-2-13 / Rev 0.0

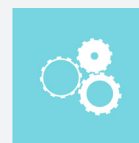
### ATRIBUTES



QUALITY

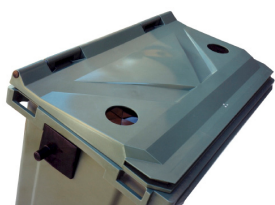


ACCESIBILITY



FUNCTIONALITY

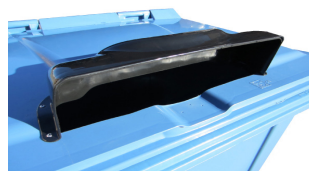
### ACCESSORIES



GLASS APERTURE



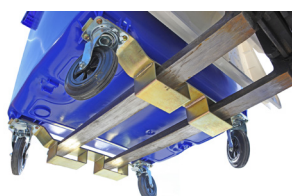
PLASTIC APERTURE



PAPER APERTURE



CENTRAL BRAKE SYSTEM



LIFTING SYSTEM



RAIN COVER



PEDAL



AVAILABLE IN A WIDE RANGE OF COLOURS

### EQUIPMENT

160 or 200 mm diameter wheels.

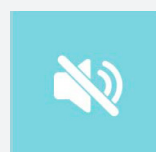
Openings with sizes and features specially designed to accommodate each type of waste, making them easy to use.

Integrated sound-proofing system in the lid.

Integrated handles in the body and lid for easy handling.

Recess for electronic chips.

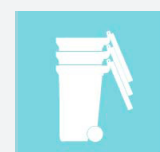
Can be equipped with a range of accessories providing real solutions to every requirement: pedal-operated lid opening, reflective strips, lock, side handle.



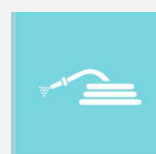
Sound-proofing



Lock



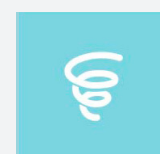
Easy to stack



Easy to clean



Break



Shock absorber